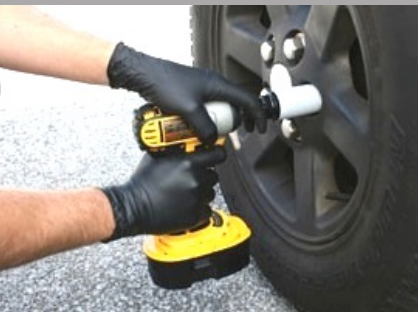
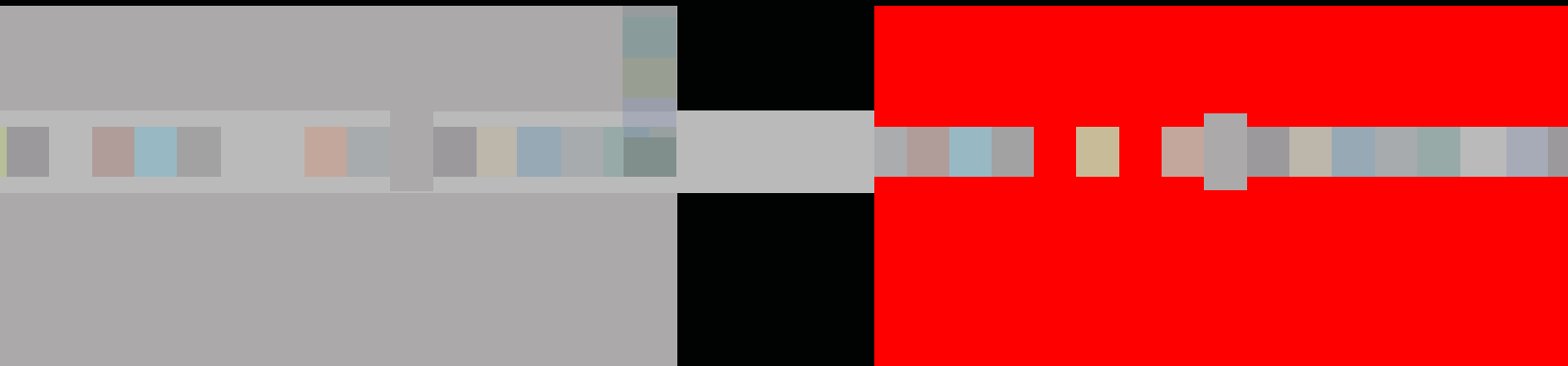




Wholesale Distribution



MINI CATALOG



DANE™

- Single Wrap-Around Lens
- Bayonet Temple Design
- Scratch Resistant Polycarbonate Lens
- Integrated Nose Piece
- Meets ANSI Z87.1 + Standards
- Provides 99.9% UV Protection

EL15S
Blue with Frosted
Blue Frame
EL15ST
Blue/Anti-Fog

EL10S
Clear with
Frosted Clear
Frame
EL10ST
Clear/Anti-Fog



EL50S
Indoor-
Outdoor with
Frosted Clear
Frame



EL70S
Silver
Mirror with
Black Frame



EL20S
Gray with
Frosted Gray
Frame
EL20S
Gray/Anti-Fog



EL60S
Blue
Mirror with
Black Frame



EL80S
Rainbow
Mirror with
Black Frame



EL25S
Brown with
Frosted Brown
Frame



EL30S
Amber with
Frosted Amber
Lens



Style #	Lens	Frame
EL10S	Clear	Frosted Clear
EL10ST	Clear with Anti-Fog	Frosted Clear
EBL10S10	Clear with 1.0 Diopter	Frosted Clear
EBL10S15	Clear with 1.5 Diopter	Frosted Clear
EBL10S20	Clear with 2.0 Diopter	Frosted Clear
EBL10S25	Clear with 2.5 Diopter	Frosted Clear
EL15S	Light Blue	Frosted Blue
EL15ST	Light Blue with Anti-Fog	Frosted Blue
EL20S	Gray	Frosted Gray
EL20ST	Gray with Anti-Fog	Frosted Gray
EL25S	Brown	Frosted Brown
EL30S	Amber	Frosted Amber
EL50S	Indoor-Outdoor	Frosted Clear
EL60S	Blue Mirror	Black
EL70S	Silver Mirror	Black
EL80S	Rainbow Mirror	Black



Diopters Available
1.0-2.5 Strengths

BULLDOG™



- Single Wrap-Around Lens
- Spatula Temple Design
- Scratch Resistant Polycarbonate Lens
- Integrated Nose Piece
- Meets ANSI Z87.1 + Standards
- Provides 99.9% UV Protection

EHB60S
Blue Mirror with
Black Frame

EHF10S

Clear with Frosted
Clear Frame

EHF10ST

Clear/Anti-Fog

EPHF10S

Clear Bulldog Pups™

EPHF10ST

Clear/Anti-Fog

Bulldog Pups™

EO4F10

Clear/Uncoated



EHB30S

Amber with
Frosted Amber
Frame



EHB50S

Indoor-Outdoor
with Black Frame

EPHB50S

Indoor/Outdoor
Bulldog Pups™



EHF15S

Light Blue with
Frosted Blue Frame

EPHF15S

Light Blue Bulldog
Pups™



EHB70S

Silver Mirror
with Black Frame



EHB20S

Gray with
Black Frame

EHB20ST

Gray/Anti-fog with
Black Frame

EPHB20S

Gray Bulldog Pups™

EO4B20

Gray/Uncoated



EHB80S

Rainbow Mirror
with
Black Frame



Standard Size



BULLDOG
pups
(Smaller Sizes)

CATALYST™

EOB70S Silver Mirror

- Shiny Black Nylon Frame
- Dual Wrap-Around Lens Design
- Scratch Resistant Polycarbonate Lens
- Bayonet Temple Design
- Thermo-Plastic Temples & Nose Piece
- Meets ANSI Z87.1 + Standards
- Provides 99.9% UV Protection

EOB10S

Clear

EOB10ST

Clear/Anti-Fog



EOB50S

Indoor-Outdoor



EOB20S

Gray

EOB20ST

Gray/Anti-Fog



EOB60S

Blue Mirror



EOB30S

Amber



EOB90S

Orange



TYPE R, CLASS 2 SAFETY VESTS



VZ261P

VZ260P

VZ260P/VZ261P S-5XL

Class II Mesh Vest

- Type R, Class 2: ANSI/ISEA 107-2015
- Orange or Lime Mesh Fabric
- Non-Conductive Zipper Closure
- 2-inch Silver Reflective Tape
- Pockets: One Inside Lower & One Outside Chest



VB231P

VB230P

VB230P/VB231P S-7XL

5-Point Breakaway Vest

- Type R, Class 2: ANSI/ISEA 107-2015
- Orange or Lime Mesh Fabric
- Hook & Loop Closure
- 2-inch Silver Reflective Tape
- Pockets: One Outside Lower, One Inside Lower with Hook & Loop Closure



V221

V220

V220 S-4XL

V221 S-7XL

Class II Solid Vest

- Type R, Class 2: ANSI/ISEA 107-2015
- Orange or Lime Solid Fabric
- Hook & Loop Closure
- 2-inch Silver Reflective Tape
- No Pockets



V211P

V210P

V210P/V211P S-7XL

Class II Mesh Vest

- Type R, Class 2: ANSI/ISEA 107-2015
- Orange or Lime Mesh Fabric
- Hook & Loop Closure
- 2-inch Silver Reflective Tape
- No Pockets



EASTERN
Glove & Safety

SHIRTS COR-BRITE™



- Birdseye Mesh Fabric wicks moisture away from skin to accelerate cooling.
- Chest Pockets: Ideal for Company Logos.



V130

V131

V130/V131 S-5XL Cor-Brite™ Short Sleeve Shirt

- Type O, Non-Rated
- Orange or Lime Birdseye Mesh Fabric
- Moisture Wicking
- Chest Pocket



V140

V141

V140/V141 S-5XL Cor-Brite™ Long Sleeve Shirt

- Type O, Non-Rated
- Orange or Lime Birdseye Mesh Fabric
- Moisture Wicking
- Chest Pocket



V420

V421

V420/V421 S-5XL Cor-Brite™ Sleeveless Shirt

- Type R, Class 2: ANSI/ISEA 107-2015
- Orange or Lime Birdseye Mesh Fabric
- Moisture Wicking
- 2-inch Silver Reflective Tape
- Chest Pocket



V410

V411

V410/V411 S-5XL Cor-Brite™ Short Sleeve Shirt

- Type R, Class 2: ANSI/ISEA 107-2015
- Moisture Wicking
- Orange or Lime Birdseye Mesh Fabric
- 2-inch Silver Reflective Tape
- Chest Pocket

DUO SAFETY™ HELMETS

- High Density Polyethylene Construction
- Meets ANSI/ISEA Z89.1-2014, Class E & G
- Sleek, Low-Profile Design
- Cap Style and Full-Brim Models
- Pinlock & Ratchet Suspensions
- Made in USA
- Cushioned Brow Pad
- Vertical Height Adjustment



H24R1



DUO CAP STYLE 6-POINT NYLON SUSPENSION

Style #	Color	Suspension Type
H26S1	White	6-Pt. Pinlock
H26S2	Yellow	6-Pt. Pinlock
H26S3	Orange	6-Pt. Pinlock
H26S4	Red	6-Pt. Pinlock
H26S5	Blue	6-Pt. Pinlock
H26R1	White	6-Pt. Ratchet
H26R2	Yellow	6-Pt. Ratchet
H26R3	Orange	6-Pt. Ratchet
H26R4	Red	6-Pt. Ratchet
H26R5	Blue	6-Pt. Ratchet
H26R6	Hi-Vis Green	6-Pt. Ratchet
H26R7	Black	6-Pt. Ratchet
H26R8	Hi-Vis Orange	6-Pt. Ratchet
H26R9	Forest Green	6-Pt. Ratchet
H26R10	Dove Gray	6-Pt. Ratchet

DUO CAP STYLE 4-POINT NYLON SUSPENSION

Style #	Color	Suspension Type
H24S1	White	4-Pt. Pinlock
H24S2	Yellow	4-Pt. Pinlock
H24S3	Orange	4-Pt. Pinlock
H24S4	Red	4-Pt. Pinlock
H24S5	Blue	4-Pt. Pinlock
H24S9	Forest Green	4-Pt. Pinlock
H24R1	White	4-Pt. Ratchet
H24R2	Yellow	4-Pt. Ratchet
H24R3	Orange	4-Pt. Ratchet
H24R4	Red	4-Pt. Ratchet
H24R5	Blue	4-Pt. Ratchet
H24R6	Hi-Vis Green	4-Pt. Ratchet
H24R7	Black	4-Pt. Ratchet
H24R8	Hi-Vis Orange	4-Pt. Ratchet
H24R9	Forest Green	4-Pt. Ratchet
H24R10	Dove Gray	4-Pt. Ratchet

4-POINT SUSPENSION



6-POINT SUSPENSION

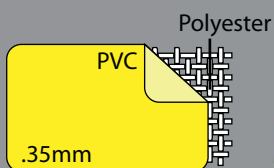


DUO Helmets can be easily customized with high quality, permanent pad-printed logos.

- Low Minimums
- Quick Turnaround Times
- Competitive Pricing

STORMFRONT™

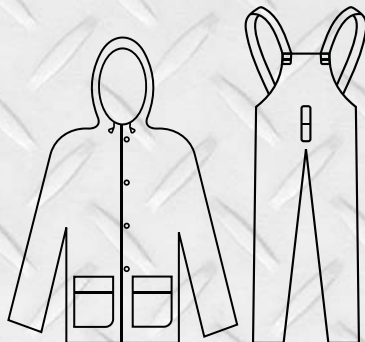
- Yellow, .35mm PVC/Polyester Fabric
- Cordova's Most Popular Rainwear



RS352Y S-3XL

Stormfront™ 2-Piece Rain Suit

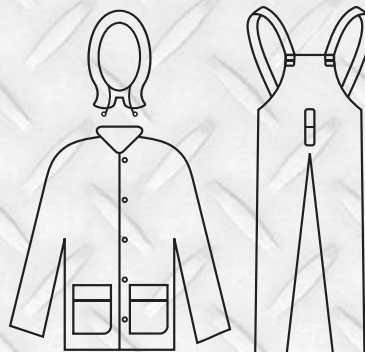
- Attached Hood with Drawstring
- Ventilated Cape Back & Underarms
- Two Flapped Pockets
- Storm Fly Front with Zipper/Snap Buttons
- Bib-Style Pants with Suspenders



RS353Y S-7XL

Stormfront™ 3-Piece Rain Suit

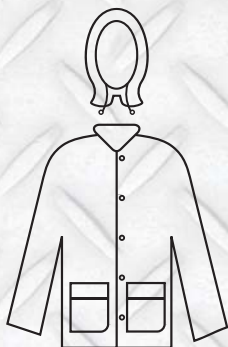
- Detachable Hood with Drawstring
- Corduroy Collar
- Ventilated Cape Back & Underarms
- Two Flapped Pockets
- Storm Fly Front with Zipper/Snap Buttons
- Bib-Style Pants with Suspenders



RJ352Y S-4XL

Stormfront™ 2-Piece Rain Jacket

- Detachable Hood with Drawstring
- Corduroy Collar
- Ventilated Cape Back & Underarms
- Two Flapped Pockets
- Storm Fly Front with Zipper/Snap Buttons



RWP35Y S-4XL

Stormfront™ Rain Pants

- Elastic Waist/No Fly



RJH35Y S-3XL

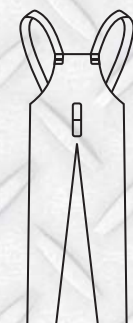
StormFront™ 1-Piece Rain Jacket with Attached Hood



RB35Y S-3XL

Stormfront™ Rain Pants

- Bib-Style Pants with Suspenders
- Snap Fly



Rainwear Size Chart
Page 28

PREMIUM MICROPOROUS PROTECTIVE CLOTHING

Eastern Glove & Safety Protective Clothing is constructed of tough, composite fabric that combines breathable Microporous Film and soft Non-Woven Polyolefin. Eastern Glove & Safety Protective Clothing provides an effective barrier against particulates, aerosols and liquids while maintaining wearer comfort. Designed for work environments where hazardous and non-hazardous liquid & dry particulate contaminants may be present.

EG1412



- Serged Seams
- Reinforced High Stress Areas
- Anti-Static (EN 1149)
- ANSI/ISEA 101-2014 Compliant Sizing
- Safe for Food Contact

EG1412 S-5XL

Microporous Coverall with Zipper Front & Collar, Open Wrists & Ankles, No Hood, No Boots

EG1417 S-5XL

Microporous Coverall with Zipper Front & Collar, Elastic Wrists & Ankles, No Hood, No Boots

EG1428 S-5XL

Microporous Coverall with Hood, Zipper Front, Elastic at Hood, Wrists & Ankles, No Boots

EG1414 S-5XL

Microporous Coverall with Hood & Boots, Zipper Front, Elastic at Hood, Wrists & Ankles

EG601 One Size Fits All

Microporous Sleeve, 18-inch length, Elastic at both ends

EG602 One Size Fits All

Microporous Apron, 28-inch x 46-inch, Bib-Style, Bound Neck & Ties

EG601

EG602



EG1428



Applications: Agriculture, Mold Remediation, Asbestos & Lead Abatement, Laboratories, Environmental Cleanups, Pesticides, Food Processing, Sanitation Engineering, Inspection, Pharmaceutical Manufacturing.



NIH X

n h a l e x h a l e

r e s p i r a t o r s

NIOSH Approved N95 Respirators provide a minimum of 95% filtration efficiency against solid and liquid aerosols that do not contain oil. Examples: China Clay, Cement, Cellulose, Sulfur, Cotton, Flour, Carbon, Ferrous Metals, Saw Dust, Coal, Iron Ore, Aluminum, Bacteria and Mycobacterium Tuberculosis (T.B.).



- NX95V2**
Class N95
Valved Particulate Respirator
- Contoured Molded Design
 - NIOSH Approved
 - Adjustable Aluminum Nose Piece
 - Foam Nose Pad
 - 10/Box, 12 Boxes/Case



- NX952**
Class N95
Particulate Respirator
- Contoured Molded Design
 - NIOSH Approved
 - Adjustable Aluminum Nose Piece
 - Foam Nose Pad
 - 20/Box, 12 Boxes/Case



- NX95V**
Class N95
Valved Particulate Respirator
- NIOSH Approved
 - Two Latex-Free Straps
 - Adjustable Aluminum Nose Piece
 - Polyethylene Nose Pad
 - 10/Box, 12 Boxes/Case



- NX95**
Class N95
Particulate Respirator
- NIOSH Approved
 - Two Latex-Free Straps
 - Adjustable Aluminum Nose Piece
 - Polyethylene Nose Pad
 - 20/Box, 12 Boxes/Case



- DM01**
Nuisance/Dust Mask
- Not NIOSH Approved
 - One Elastic Strap
 - Adjustable Aluminum Nose Piece
 - 50/Box, 20 Boxes/Case



HIGH PERFORMANCE HPPE

ANSI
A2
CUT



CR3716 Caliber™ XS-2XL

- 13-Gauge, White HPPE Shell
- Gray Polyurethane Coating
- CE Cut Level 3, CE/EN 388: 4342
- ANSI Cut Level A2: 729 grams



CR3725 Tuf-Cor™ S-2XL

- 13-Gauge HPPE Shell
- Full Blue Nitrile Inner Layer
- PPG Approved for Glass Handling (pg. 60)
- Black Sandy Nitrile Outer Palm
- CE Cut Level 3, CE/EN 388: 4343
- ANSI Cut Level A2: 580 grams



CR3716G Caliber™ XS-2XL

- 13-Gauge, Salt & Pepper HPPE Shell
- Gray Polyurethane Coating
- CE Cut Level 3, CE/EN 388: 4342
- ANSI Cut Level A2: 729 grams



CR3712 Mirage™ XS-2XL

- 13-Gauge, White HPPE Shell
- White Polyurethane Coating
- CE Cut Level 3, CE/EN 388: 4342
- ANSI Cut Level A2: 558 grams



CR3712G Rival™ XS-2XL

- 13-Gauge, Gray HPPE Shell
- Gray Polyurethane Coating
- CE Cut Level 3, CE/EN 388: 4342
- ANSI Cut Level A2: 558 grams

MECHANICS



- Form Fitting Multi-Task Hand Protection
- Available with Synthetic Leather, Goatskin and Deerskin Palms
- All Models Feature Hook & Loop Closures for Snug Fit

**AG77271 Pit Pro™ M-XL**

- Premium Deerskin Leather Palm
- Fingertip & Knuckle Protectors
- Breathable Perforated Forchettes
- Black Spandex® Back
- Hook & Loop Closure

**AG77371 Pit Pro™ M-XL**

- Black Synthetic Leather Double Palm
- Fingertip & Knuckle Protectors
- Breathable Perforated Forchettes
- Blue Spandex® Back
- Hook & Loop Closure

**AG77971 Pit Pro™ S-2XL**

- Goatskin Double Palm
- Fingertip Protectors
- Black Spandex® Back
- Keystone Thumb
- Hook & Loop Closure

**AG77071 Pit Pro™ M-XL**

- Black Synthetic Leather Palm
- Reinforced Thumb Crotch
- Breathable Perforated Forchettes
- Orange Spandex® Back
- Hook & Loop Closure

**AG77171 Pit Pro™ M-XL**

- Black Synthetic Leather Palm
- Reinforced Finger tips
- Breathable Perforated Forchettes
- Knuckle Flex Panels
- Black Spandex® Back
- Continuous Pull Tab
- Hook & Loop Closure

COATED MACHINE KNITS

NITRILE

Nitrile is an oil-resistant synthetic rubber that is abrasion, snag & puncture resistant. Seamless Nitrile gloves are incredibly durable and offer excellent sense of touch. "Flat" Nitrile coatings are smooth, shiny and liquid-resistant. "Foam" Nitrile coatings are porous which channels oil away from the glove surface for a secure grip in light oil applications.



NT6893 Cor-Touch Foam™ XS-2XL

- 13-Gauge, Gray Nylon Shell
- Black Foam Nitrile Coating
- CE/EN 388: 4121

NT6891 Cor-Touch Foam II™ XS-2XL

- 13-Gauge, White Nylon Shell
- Gray Foam Nitrile Coating
- CE/EN 388: 4121



NT6897 Cor-Touch Foam Plus™ XS-XL

- 13-Gauge, Black Nylon Shell
- 3/4 Black Foam Nitrile Coating
- CE/EN 388: 4121

NT6899 Cor-Touch Xtra™ XS-2XL

- 13-Gauge, Black Nylon/Spandex Shell
- 3/4 Black Nitrile/PU Coating • Nitrile Dots



NT6890 Cor-Touch™ S-XL

- 13-Gauge, White Nylon Shell
- Gray Flat Nitrile Coating
- CE/EN 388: 4121

NT6890G Cor-Touch™ S-XL

- 13-Gauge, Gray Nylon Shell
- Black Flat Nitrile Coating
- CE/EN 388: 4121



NT6894 Cor-Touch II™ XS-XL

- 13-Gauge, Gray Polyester Shell
- Black Flat Nitrile Coating
- CE/EN 388: 3121



NT6892 Cor-Touch II™ S-XL

- 13-Gauge, White Polyester Shell
- Gray Flat Nitrile Coating
- CE/EN 388: 3121



COATED MACHINE KNITS *POLYURETHANE*

Applications: Painting, Appliance Manufacturing, Sensitive Assembly Operations, Aerospace, Wiring

HAND PROTECTION



PY6895 Cor-Touch Lite™ XS-2XL

- 15-Gauge, White Nylon Shell
- White Polyurethane Coating
- CE/EN 388: 4131



PY6895G Cor-Touch Lite™ XS-2XL

- 15-Gauge, Gray Nylon/PU Shell
- Gray Polyurethane Coating
- CE/EN 388: 4131



PY6895B Cor-Touch Lite™ XS-2XL

- 15-Gauge, Black Nylon Shell
- Gray Polyurethane Coating
- CE/EN 388: 4131



PY6895C XS-2XL

- 13-Gauge, White Nylon Shell
- White Polyurethane Coating

PY6898C XS-2XL

- 13-Gauge, White Polyester Shell
- White Polyurethane Coating



PY6895CG XS-2XL

- 13-Gauge, Gray Nylon Shell
- Gray Polyurethane Coating

PY6898CG XS-2XL

- 13-Gauge, Gray Polyester Shell
- Gray Polyurethane Coating



PY6896C XS-2XL

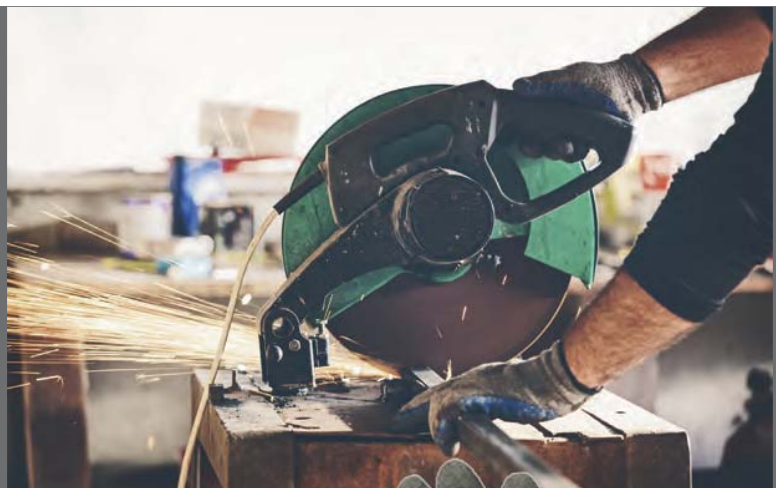
- 13-Gauge, Black Nylon Shell
- Black Polyurethane Coating

PY6898CB XS-2XL

- 13-Gauge, Black Polyester Shell
- Black Polyurethane Coating

COATED MACHINE KNITS NATURAL RUBBER LATEX

Natural Rubber Latex gloves offer exceptional gripping power and outstanding protection against punctures and abrasion. Seamless machine knit shells and the high elasticity of Latex make gloves form-fitting, flexible and comfortable. Natural Rubber Latex may cause allergic reactions in some individuals.



LX3986P Cor-Grip Pro™ S-XL

- 10-Gauge, Gray Poly/Cotton Shell
- Premium Blue Crinkle Latex Coating
- CE/EN 388: 3242



LX3895 Cor-Grip II™ S-XL

- 10-Gauge, Gray Poly/Cotton Shell
- Gray Crinkle Latex Coating
- CE/EN 388: 2142
- LX3897 S-XL**
- Economy Version



LX3894 Cor-Grip III™ S-XL

- 10-Gauge, Yellow Poly/Cotton Shell
- Blue Crinkle Latex Coating
- CE/EN 388: 2142

LX3896 Cor-Grip™ S-XL

- 10-Gauge, Gray Poly/Cotton Shell
- Blue Crinkle Latex Coating
- Fully Coated Thumb
- CE/EN 388: 2142
- LX3898 S-XL**
- Economy Version



LX3996 Cor-Grip™ Xtra S-XL

- 10-Gauge, Gray Poly/Cotton Shell
- 3/4 Blue Crinkle Latex Coating
- CE/EN 388: 2142

COATED MACHINE KNITS INSULATED



Foam PVC Remains
Flexible in Temperatures
as low as -32°F



LX3905 Cold Snap Max™ M-2XL

- Two-Layer Acrylic/Polyester Shell
- ¾ Foam PVC Coating
- CE/EN 388: 3232
- CE/EN 511: Contact Cold Level 2

LX3915 Cold Snap Xtreme™ M-2XL

- Two-Layer Acrylic/Polyester Shell
- Full Foam PVC Coating
- CE/EN 388: 3232
- CE/EN 511: Contact Cold Level 2



LX3888 iON Chill™ S-XL

- 10-Gauge, Orange Thermal Shell
- Brushed, Loop-In Acrylic
- Sandy Latex Coating
- CE/EN 388: 2241



LX3889 Thermo-Viz™ S-XL

- 10-Gauge, Hi-Vis Thermal Shell
- Brushed, Loop-In, Acrylic
- Blue Crinkle Latex Coating
- CE/EN 388: 3131



LX3899 Thermo-Cor™ S-XL

- 10-Gauge, Gray Thermal Shell
- Brushed, Loop-In, Acrylic
- Gray Crinkle Latex Coating
- CE/EN 388: 3131



LX3999 Cold Snap™ S-XL

- 7-Gauge, Hi Vis Green, Thermal Shell
- Brushed, Loop-In Acrylic
- Black Foam Latex Coating



LX3990 Cold Snap Plus™ M-XL

- 13-Gauge Poly Outer Shell
- Brushed Acrylic Inner Shell
- ¾ Black Foam Latex Coating
- CE-EN 388: 3131



LEATHER GRAIN COWHIDE DRIVERS

HAND PROTECTION



COWHIDE

Cowhide is comfortable, durable and abrasion resistant. It is the most commonly used leather in the glove market. Cowhide leather gloves are typically chrome tanned to promote longevity.



LX513ST XS-3XL

- Standard Grain Cowhide Driver
- Unlined
- Shirred Elastic Back
- Straight Thumb

LX8215 S-2XL

- Economy Grain Cowhide Driver
- Unlined/Straight Thumb



LX513KT S-3XL

- Standard Grain Cowhide Driver
- Unlined
- Shirred Elastic Back
- Keystone Thumb

LX8212 S-3XL

- Beige Grain Cowhide Driver
- Unlined/Keystone Thumb



LX8221 S-2XL

- Select Grain Cowhide Driver
- Unlined
- Ball & Tape Back
- Keystone Thumb

HEM
COLOR
SIZING
CHART

	Small
	Medium
	Large
	X-Large
	2X-Large
	3X-Large



LX8225 S-XL

- Select Grain Cowhide Driver
- Unlined
- Leather Rull Strap Back
- Keystone Thumb

LX8223 S-XL

- Economy Grain Cowhide Driver
- Straight Thumb



EASTERN
Glove & Safety

LEATHER

PREMIUM & SELECT SPLIT LEATHER PALMS



LX7254R L

- Select Shoulder Leather Palm
- Blue/Red Striped Fabric
- Gunn Cut Pattern
- Rubberized Gauntlet Cuff

LX7250R S-XL, 3XL

- Select Shoulder Leather Palm
- Rubberized Safety Cuff



LX7300R S-2XL

- Premium Shoulder Leather Palm
- Blue/Red Striped Fabric
- Gunn Cut Pattern
- Rubberized Safety Cuff



LX7351R L

- Premium Shoulder Leather Double Palm
- Pink/Green Striped Fabric
- Gunn Cutt Pattern
- Rubberized Safety Cuff

LX7352R L (Ladies)

- Premium Shoulder Leather Double Palm
- Rubberized Safety Cuff



LX7330 L & XL

- Premium Shoulder Leather Palm
- Full Leather Back
- Blue/Red Striped Fabric
- Rubberized Safety Cuff

LX7340 L & XL

- Full Leather Back
- Rubberized Gauntlet Cuff

LX7320 L

- 3/4 Leather Back
- Rubberized Safety Cuff

SUPPORTED PVC

- Provides Excellent Resistance to most Acids, Oils, Animal Fats, Caustics, Petroleum Hydrocarbons and Alcohols.



PC5012R

- Black Single Dipped PVC
- Rough Finish
- Interlock Lining

PC5012R: 12-inch Length, Interlock Lining

PC5014R: 14-inch Length

PC5018R: 18-inch Length



PC5000

- Black PVC
- Smooth Finish
- Interlock Lining

PC5000: Knit Wrist

PC5010: 10-inch Length

PC5012: 12-inch Length

PC5014: 14-inch Length

PC5018: 18-inch Length



PC5210J

- Green Double Dipped PVC
- Etched Finish
- Jersey Lining

PC5200J: Knit Wrist

PC5210J: 10-inch Length, Jersey Lining

PC5212J: 12-inch Length

PC5214J: 14-inch Length

PC5218J: 18-inch Length



PC5112I

- Black Double Dipped PVC
- Etched Finish
- Interlock Lining or Jersey Lining

PC5100I: Knit Wrist, Interlock Lined

PC5100J: Knit Wrist, Jersey Lined

PC5110I: 10-inch Length, Interlock Lining

PC5110J: 10-inch Length, Jersey Lining

PC5112I: 12-inch Length, Interlock Lining

PC5112J: 12-inch Length, Jersey Lining

PC5114I: 14-inch Length, Interlock Lining

PC5114J: 14-inch Length, Jersey Lining

PC5118I: 18-inch Length, Interlock Lining



PC5114SI

- Black Double Dipped PVC
- Sandpaper Finish
- Interlock Lining or Jersey Lining

PC5100SI: Knit Wrist, Interlock Lined

PC5100SJ: Knit Wrist, Jersey Lined

PC5110SI: 10-inch Length, Interlock Lining

PC5110SJ: 10-inch Length, Jersey Lining

PC5112SI: 12-inch Length, Interlock Lining

PC5112SJ: 12-inch Length, Jersey Lining

PC5114SI: 14-inch Length, Interlock Lining

PC5114SJ: 14-inch Length, Jersey Lining

DISPOSABLE NITRILE

Industrial Applications: Food Processing, Printing, Painting, Inspection, Automobile Maintenance & Repair

Medical Applications: Patient Exams, First Aid, Dentistry, Laboratories, Pharmaceutical Manufacturing, Home Health Care



NT4085 Nitri-Cor Gold™ S-2XL

- Class 1 Medical Device
- 4-mil/Powder Free



NT4090 Nitri-Cor Silver™ S-XL

- Industrial/Food Service Grade
- 4-mil/Powdered

NT4095 Nitri-Cor Silver™ S-2XL

- Powder Free



NT4091 Nitri-Cor Platinum™ S-XL

- Industrial/Food Service Grade
- 8-mil/Powdered

NT4097 Nitri-Cor Platinum™ S-XL

- Powder Free



NT4096 Nitri-Cor Soft™ S-XL

- Industrial/Food Service Grade
- 3-mil/Powder Free

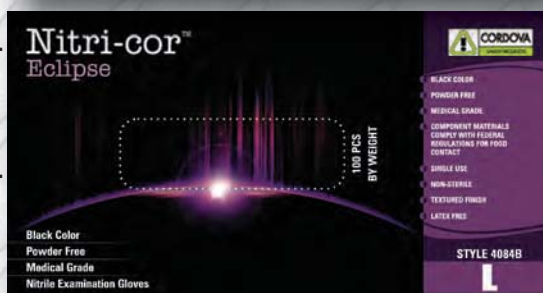


NT4084B Nitri-Cor Eclipse™ S-XL

- Class I Medical Device
- Black Color
- 4-mil/Powder Free

NT4083B Nitri-Cor Eclipse™ S-XL

- Industrial Grade/Food Service
- Black Color
- 4-mil/Powder-Free Grade



DISPOSABLE LATEX

- Ultimate Tactile Sensitivity
- Textured Finish for Gripping Power
- Safe for Food Contact Applications



LATEX

Style	Trade Name	Description	Sizes
LX4010	Cordova Gold™	Class I Medical Device, Powder Free	XS-XL
LX4020	Cordova Silver™	Industrial/Food Service Grade, Powdered	XS-XL
LX4015	Cordova Silver™	Industrial/Food Service Grade, Powder Free	XS-XL
LX4025	Cordova Silver II™	Commodity/Food Service Grade, Powdered	S-XL
LX4026	Cordova Silver II™	Commodity/Food Service Grade, Powder Free	S-XL



LX4010



LX4020



LX4030 Dura-Cor™ S-XL

- Class I Medical Device
- Royal Blue Color
- 11-mil/Powder Free
- Textured Finish
- 12-Inch Length



LX4035 Dura-Cor Max™ S-XL

- Industrial/Food Service Grade
- Royal Blue Color
- 15-mil/Powder Free
- Textured Finish
- 12-Inch Length

COMPONENT MATERIALS OF ALL STYLES COMPLY WITH ALL FEDERAL REGULATIONS FOR FOOD CONTACT

Caution: Some Products on this page contain Natural Rubber Latex which may cause allergic reactions in some individuals.

DISPOSABLE VINYL & PE

- Available in Clear, Blue & Green
- Soft Formulation and Loose Fit
- Keep hands Cool and Comfortable
- Safe for Food Contact Applications



VN4072

VINYL

Style	Trade Name	Description	Sizes
VN4060	Syn-Cor Gold™	Class I Medical Device, Powder Free	S-XL
VN4075	Syn-Cor Silver™	Industrial/Food Service Grade, Powdered	S-XL
VN4062	Syn-Cor Silver™	Industrial/Food Service Grade, Powder Free	S-XL
VN4074	Syn-Cor Silver II™	Commodity/Food Service Grade, Powdered	S-XXL
VN4064	Syn-Cor Silver II™	Commodity/Food Service Grade, Powder Free	S-XXL
VN4071	Syn-Cor Blue™	Industrial/Food Service Grade, Powdered	S-XL
VN4072	Syn-Cor Blue™	Industrial/Food Service Grade, Powder Free	S-XL
VN4065	Syn-Cor Green™	Industrial Food Service Grade, Powdered, 6.5-mil	S-XL
VN4067	Syn-Cor Plus™	Stretch, Industrial/Food Service Grade, Powder Free	S-XXL
VN4077	Syn-Cor Plus™	Stretch, Industrial/Food Service Grade, Powdered	S-XXL



VN4040 Syn-Cor Hybrid™ S-2XL

- Vinyl/Nitrile Blend
- Industrial/Food Service Grade
- Powder Free
- Blue Color/Smooth Texture



POLYETHYLENE

Style	Description	Sizes
PE4100	Low Density Polyethylene (LDPE), Embossed, Industrial/Food Service Grade, 100/Envelope	L
PE4102	High Density Polyethylene (HDPE), Embossed Grip, Industrial/Food Service Grade, 100/Bag	L

SERVICES

"One Stop Shop"

Gloves, Rainwear, Boots, Disposable Clothing, Safety Eyewear, Respirators, Safety Vests, Earplugs, Helmets, Back Support Belts, Barricade Tape, Safety Fencing & FR Workwear.

Convenient Shipping Locations

Reasonable Pre-Paid Minimums

Confidential Drop Shipments

Import & Domestic Private Labeling Programs

Specialty Product Development

Customize protective gear to better accommodate your customer's needs.

Generous Sampling Program

Experienced Sales Team

Customer Satisfaction Guaranteed

If an Eastern Glove & Safety product does not meet or exceed the standard of the originally sampled item, Please return it for a full refund.



EASTERN
Glove & Safety

Mailing Address

Eastern Glove & Safety
PO Box 1484
Havertown, PA 19083

Shipping Address

900 Calcon Hook Rd
Sharon Hill, PA 19079

DuPont™, Kevlar® and Thermastat® are registered trademarks of E.I. DuPont® de Nemours and Company

Lycra® is a registered trademark of Invista™

Thinsulate® is a registered trademark of 3M®

Sanitized® is a registered trademark of Sanitized AG®

MicroFinish®, ActivGrip® and PowerGrab® Thermo are registered trademarks of Towa Corporation

FireZero® is a registered trademark of Sunbridge Textiles International

1.610.324.4595
www.easternglove.com



EASTERN
Glove & Safety



sales@easternglove.com
610-324-4595
www.easternglove.com